

JV TIERNEY & CO

MECHANICAL ELECTRICAL & SUSTAINABLE ENGINEERS

SITE UTILITIES INFRASTRUCTURE REPORT

CLAREMONT, HOWTH, COUNTY DUBLIN
UTILITIES INFRASTRUCTURE

The Tannery
53-56 Cork Street
Dublin D08 P92R
Tel: +353 1 421 4900
Email: mail@jvtierney.ie
Website: www.jvtierney.ie

Claremont

Howth, County Dublin

Utility Infrastructure Report

Rev:	Issue Date:	Prepared By:	Checked By:
0	07/10/2019	DB	RB



Directors: T.F Ahern, J. Lee, N. Tobin, S. Walsh, R. Burke, A. Clifford, C. Saul.
Associates: C. Kelly, D. Conaty.
J.V. Tierney and Company (2002) Limited Trading as J.V. Tierney & Co. Registration No. 359680
Registered Office: 4th Floor, Harmony Court, Harmony Row, Dublin 2.

 Member of the Association of Consulting Engineers of Ireland



CONTENTS

- 1.0 Existing Utility Infrastructure
 - 1.1 Electricity
 - 1.2 Gas
 - 1.3 Telecoms

- 2.0 Proposed Utility Infrastructure
 - 2.1 Electricity
 - 2.2 Gas
 - 2.3 Telecoms

1.0 Existing Utility Infrastructure

1.1 Electricity

1.2 Gas

1.3 Telecoms



TITLE: 20181116-054_A3

- COLOUR CODE:
- BLACK - 38KV & HIGHER VOLTAGE OVERHEAD LINES
 - GREEN - MV(10KV/20KV) OVERHEAD LINES
 - BLUE - LV (400V/230V) OVERHEAD LINES
 - CYAN - 38KV & HIGHER VOLTAGE UNDERGROUND CABLE ROUTES
 - RED - MV/LV (10KV/20KV/400V/230V) UNDERGROUND CABLE ROUTES

DATE: 19-Nov-2018

** SCALE: 1:2000

** SCALE WHEN PRINTED ON AN A3 PAGE
XY COORDINATES DISPLAYED IN IRISH GRID COORDINATE SYSTEM

WARNING

THIS MAP INDICATES THE APPROXIMATE LOCATION OF ESB TRANSMISSION (400KV, 220KV, 110KV, 38KV) AND DISTRIBUTION (20KV, 10KV, 230V/400V) UNDERGROUND CABLES AND OVERHEAD LINES IN THE GENERAL AREA OF THE PROPOSED WORKS. ESB NETWORKS TAKES NO RESPONSIBILITY FOR THE ACCURACY OR COMPLETENESS OF THE MAP. IT IS THE USER'S RESPONSIBILITY TO INDEPENDENTLY VERIFY THE INFORMATION AND THE LOCATION OF UNDERGROUND CABLES AND OVERHEAD LINES. LOW VOLTAGE (230V/400V) SERVICE CABLES (E.G. HOUSE SERVICES, FACTORY/SHOP SERVICES, PUBLIC LIGHTING LAMP SERVICES, ETC) ARE NOT INCLUDED BUT THEIR PRESENCE SHOULD BE ANTICIPATED. THE DEPTHS OF UNDERGROUND CABLES MUST NEVER BE ASSUMED. ADDITIONAL MORE DETAILED INFORMATION IS AVAILABLE FOR HIGH VOLTAGE TRANSMISSION UNDERGROUND CABLES (38KV, 110KV, 220KV, 400KV) FROM THE LOCAL ESB NETWORKS TRANSMISSION REPRESENTATIVE - SEE ATTACHED LIST FOR CONTACT DETAILS OR CALL 1850 372 757. NO WORK SHOULD BE CARRIED OUT IN THE VICINITY OF 38KV OR HIGHER VOLTAGE UNDERGROUND CABLES WITHOUT PRIOR CONSULTATION WITH ESB NETWORKS. BEFORE ANY MECHANICAL EXCAVATION IS UNDERTAKEN, THE ACTUAL LOCATION OF ALL UNDERGROUND ELECTRICITY CABLES MUST BE ESTABLISHED AND VERIFIED ON THE SITE USING: (A) UP-TO-DATE MAP RECORDS; (B) CABLE LOCATER EQUIPMENT OPERATED IN BOTH POWER AND RADIO MODES; (C) CAREFUL HAND DIGGING OF TRIAL HOLES USING 'SAFE DIGGING PRACTICE'. REFER ALSO TO 'HSA CODE OF PRACTICE FOR AVOIDING DANGER FROM UNDERGROUND SERVICES'. ESB TAKES NO RESPONSIBILITY FOR AND SHALL BEAR NO LIABILITY, HOWSOEVER ARISING, IN RELATION TO ANY DAMAGE, INJURY/DEATH OR LOSS OF SUPPLY AS A RESULT OF DAMAGE OR INTERFERENCE WITH ITS NETWORKS.

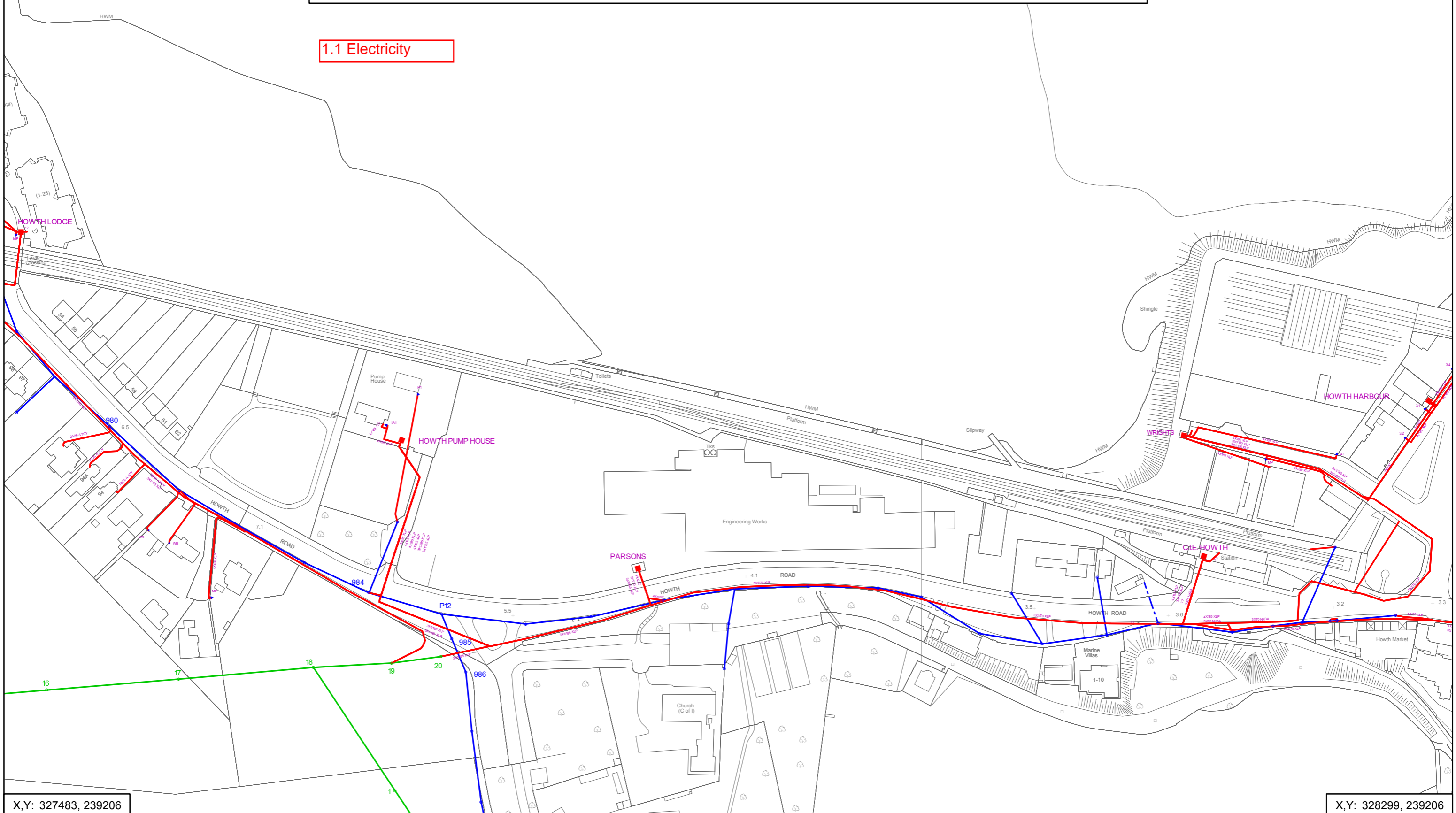
Maps reproduced by permission: Ordnance Survey Ireland Licence No. EN0023715-19, Copyright Ordnance Survey Ireland Government of Ireland

X,Y: 327483, 239690

ESB NETWORKS HAS ISSUED THIS MAP AS A PDF DOCUMENT. IF VIEWING A PAPER VERSION OF THIS MAP, THE VIEWER MUST ENSURE THAT IT HAS BEEN PRINTED IN COLOUR TO FIT TO AN A3 (OR LARGER) PAGESIZE AND THAT EACH OF THE COLOURS INDICATED ON THE COLOUR CODE LEGEND ABOVE ARE CLEAR AND DISTINCT FROM EACH OTHER TO MAINTAIN A CORRECT REPRESENTATION OF THE ELECTRICAL NETWORK INFORMATION.

X,Y: 328299, 239690

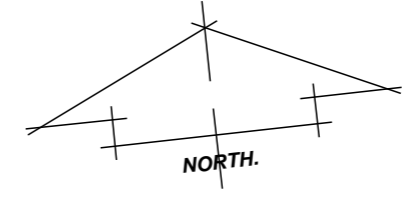
1.1 Electricity



X,Y: 327483, 239206

X,Y: 328299, 239206

1.2 Gas



Important Safety Notice:
 Damage to gas pipelines can result in serious injury or death. Gas network information is provided as a general guide. The exact location and depth of medium or low pressure distribution gas pipes must be verified on site by carrying out necessary investigations, including, for example, hand digging trial holes along the route of the pipe.
 Service pipes are not generally shown but their presence should always be anticipated.
 High pressure transmission pipelines are shown in red. If a transmission pipeline is identified within 10m of any intended excavations then work must not proceed before GNI has been consulted. The true location and depth of a transmission pipeline must be verified on site by a representative of GNI. Contact can be made through 1850 427 747.
 All work in the vicinity of the gas network must be completed in accordance with the current edition of the Health & Safety Authority publication, Code of Practice For Avoiding Danger From Underground Services which is available from the Health and Safety Authority (1890 289 389) or can be downloaded at www.hsa.ie.

Legal Notice:
 Gas Networks Ireland (GNI) and its affiliates, accept no responsibility for the accuracy of any information contained in this document including data concerning location and technical designation of the gas distribution and transmission network (the Information). The Information should not be relied on for accurate distance or depth of cover measurements.
 Any representations and warranties, express or implied, are excluded to the fullest extent permitted by law. No liability shall be accepted for any loss or damage including, without limitation, direct, indirect or consequential loss, arising out of or in connection with the use or re-use of the Information.

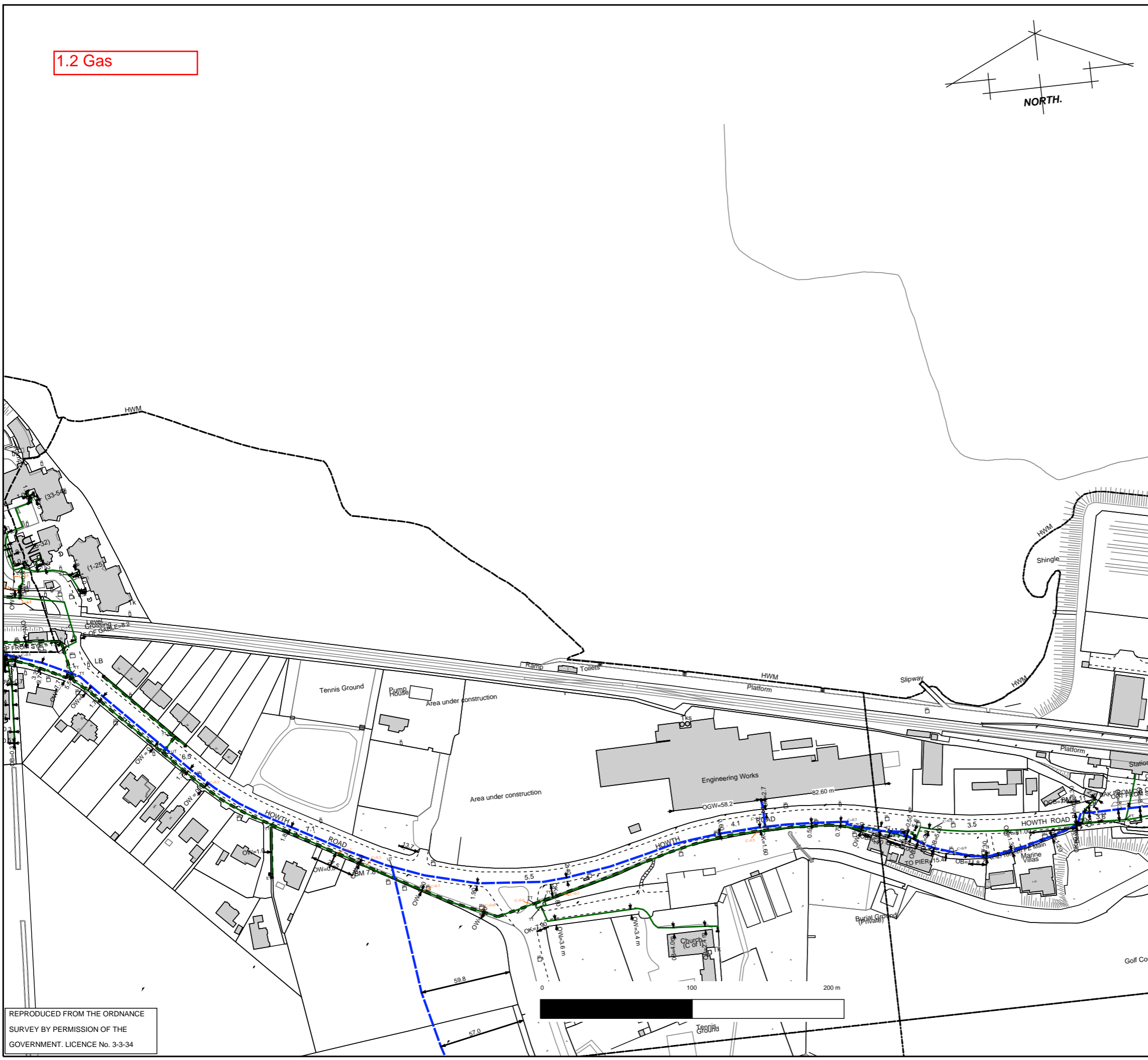
- Aurora Telecom Fibre Optic Cable
- Aurora Telecom Duct
- Aurora Telecom Sub-duct
- Aurora Telecom Inserted Gas Pipe

Contact Aurora Telecom on 1850-427-399 or (01)203-0120.

- Transmission Pipe (High Pressure)
- Transmission Pipe (Construction Issue)
- Distribution Pipe (Medium Pressure)
- Distribution Pipe (Low Pressure)
- Service Pipe (Medium Pressure)
- Service Pipe (Low Pressure)
- Strategic Pipe (Medium Pressure)
- Strategic Pipe (Low Pressure)
- Inserted Pipe (Medium Pressure)
- Inserted Pipe (Low Pressure)
- Distribution Pipe (Abandoned)

- Cover (depth in meters)
- CP Test Point
- End Cap
- Hot Tap
- Installation
- Valve
- Mains Verification **
- Pressure Monitor
- Protection (Sleeve)
- Protection (Slabbing)
- Reducer
- Service Terminator
- Tee
- Transition

** Please contact GNI on 1850-427747 for specific information.



REPRODUCED FROM THE ORDNANCE SURVEY BY PERMISSION OF THE GOVERNMENT. LICENCE No. 3-3-34

Design Department - DUBLIN

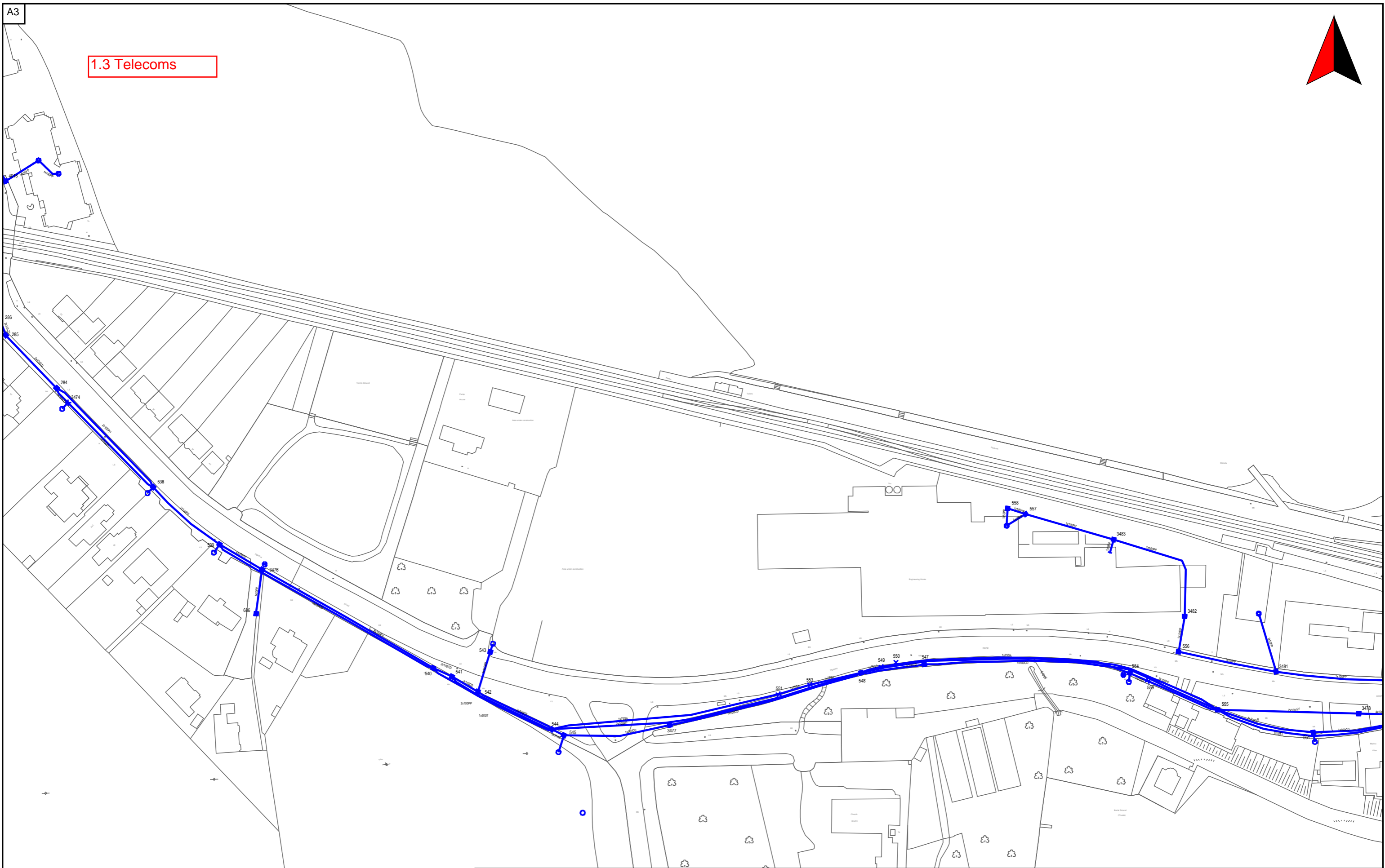
GAS NETWORK INFORMATION

Issue: JV TIERNEY

Location: howth train station

Plot Date: 15/11/18	Contact: BW
Plotted by: AA	Scale: 1:2500

1.3 Telecoms



PLANT REQUESTED FROM eircom emaps CBYD SERVICE
<https://cbyd.emaps.eircom.ie/>

Scale: 1:1500
Date: 27/11/2018

Irish National Grid Co-Ordinates
Centre XY: 327792 m, 239411 m
emaps CBYD

THE INFORMATION IN THIS DRAWING IS CONFIDENTIAL AND SHOULD NOT BE DISCLOSED TO ANY THIRD PARTY WITHOUT THE EXPRESS WRITTEN CONSENT OF eircom LTD. THE DRAWING IS NOT TO BE PHOTOCOPIED OR REPRODUCED IN ANY WAY

THE INFORMATION GIVEN IS COMPILED FROM RECORDS AND IS BELIEVED TO BE CORRECT. THERE MAY, HOWEVER, BE DEPARTURES FROM THE COURSE[S] AND DEPTH[S] SHOWN OR INDICATED. THERE MAY ALSO BE ITEMS OF eircom PLANT OF WHICH NO RECORDS IN HELD. THE INFORMATION IS GIVEN WITHOUT PREJUDICE TO THE LEGAL RIGHTS OF eircom LTD. TO COMPENSATION SHOULD eircom PLANT BE DAMAGED.



2.0 Proposed Utility Infrastructure

2.1 Electricity

2.2 Gas

2.3 Telecoms

Based on information received from all the utility providers, the area is well served and there is sufficient capacity in their respective networks for the proposed development.

This Report was prepared by: David Breen

Signed: David Breen

Position: Project Engineer
J.V. Tierney & Co.

Date: 07/10/2019

Checked by

Signed: 

Rory Burke - Chartered Engineer
Director
J.V. Tierney & Co.

Date: 07/10/2019

